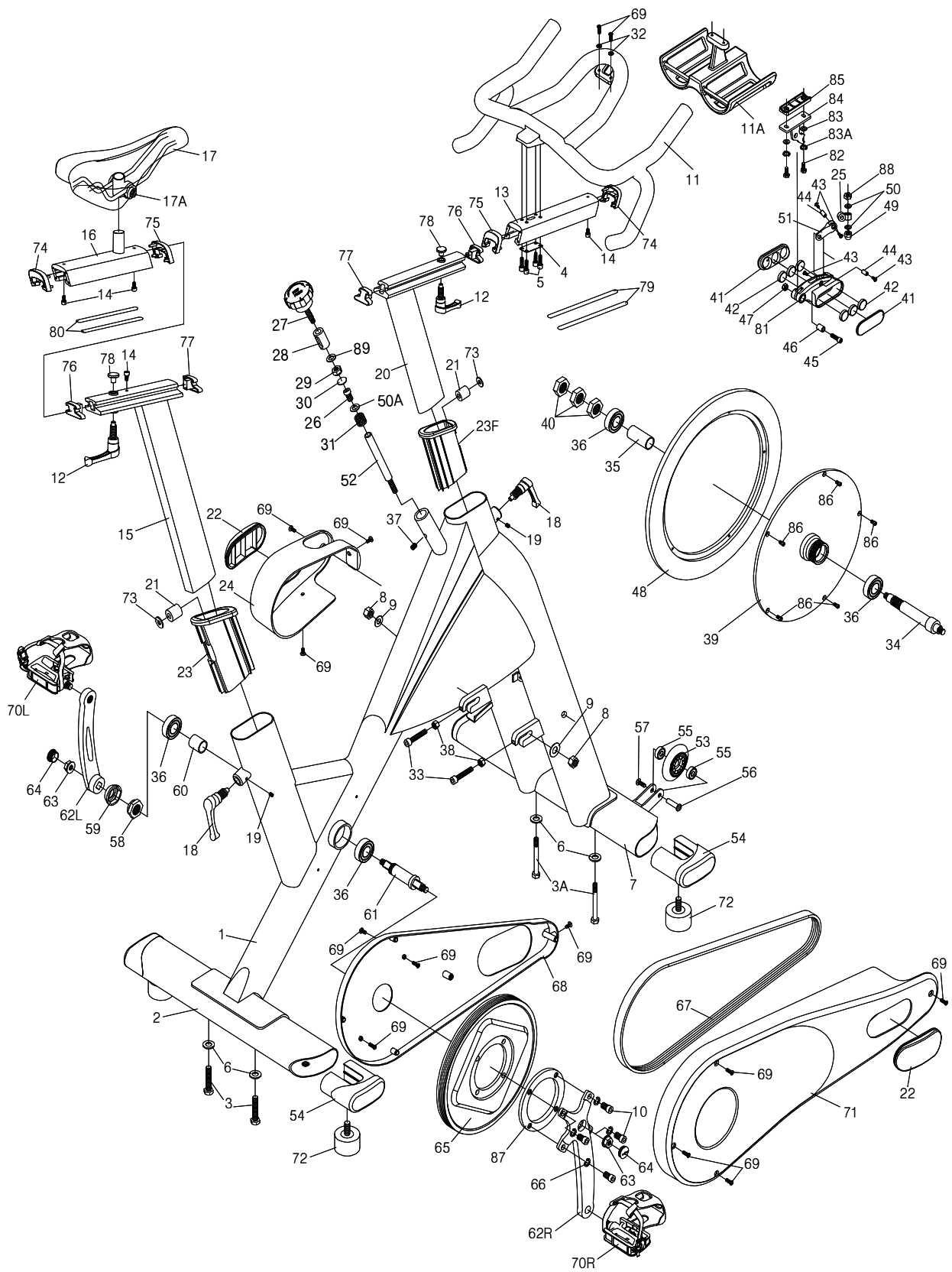


# M-791SR Exploded Diagram



## M-791SR Part List

parts no	description	q'ty	parts no	description	q'ty
1	Main Frame	1	45	Bolt	1
2	Rear Ground Tube	1	46	Sleeve	1
3	Rear Ground Tube Fixed Bolts	2	47	Nut	1
3A	Front Ground Tube fixed bolts	2	48	Fly Wheel's Alloy Ring	1
4	Handlebar & Slider fix plate	1	49	Cap Nut	1
5	bolts	4	50	Washer	2
6	Washer	4	50A	washer	2
7	Front Ground Tube	1	51	Linker	1
8	Fly Wheels Fixed Nut	2	52	Stud	1
9	Washer	2	53	PU Moving Wheel	2
10	bolts	4	54	Grounds End Cap	4
11	Handle Bar	1	55	Bearing 608ZZ	4
11A	Bottle Cage	1	56	Nut	2
12	Lock lever for HB and seat silder	2	57	Bolt	2
13	Handlebar Slider	1	58	Axle Lock Nut	1
14	Slider's safety stoper	4	59	Dusty Cover	1
15	Seat Post	1	60	Spacer	1
16	Saddle slider	1	61	B.B Axle	1
17	Saddle	1	62L	Left Crank	1
17A	Saddle clamp	1	62R	Right Crank	1
18	Lock Lever For Stem & Post	2	63	Flange Nut	2
19	Set Screw	2	64	Plastic cap	2
20	Stem	1	65	Driving Pulley	1
21	Locking Piece	2	66	washer	4
22	Pop cover	2	67	Belt	1
23F/23	Plastic Sleeve for H/T and S/T	2	68	Inner Cover	1
24	Left Cover	1	69	Screw	13
25	Nut	1	70 R/L	WPD-E003 seal bearing w/ toe clip&strap.	1
26	Nut	1	71	Outer Chain Cover	1
27	Adjust Knob	1	72	Ground Tube's Adjusting Pad	4
28	Floating Piece	1	73	Washer	2
29	Nut	2	74	HB(F) & Saddle Slider's (R) End Cap	2
30	Washer	2	75	HB(R) & Saddle Slider's (F) End Cap	2
31	Spring	1	76	Stem(F) & Post Slider's (R) End Cap	2
32	washer	1	77	Stem(R) & Post Slider's (F) End Cap	2
33	Axles Adjusting Bolts	2	78	Stem/Post Slider's Locking Piece	2
34	Fly Wheels Axle	1	79	Stem Top Slider's Protector	2
35	Spacer	1	80	Saddle Slider's Protector	2
36	B.B & Fly Wheel Axle's Bearing	4	81	Magnetic Set	1
37	Floating piece set screw	1	82	Screw	2
38	Nut	2	83	Washer	2
39	Casting Flywheel	1	83A	Washer	2
40	Lock Nut	3	84	Magnetic set's Mounting bass	1
41	Magnetic set's side cover	2	85	Adapter	1
42	Magnet	6	86	Screw	5
43	Screw Set	4	87	Gusset Ring	1
44	Sleeve	2	88	nut	1
			89	Washer	1